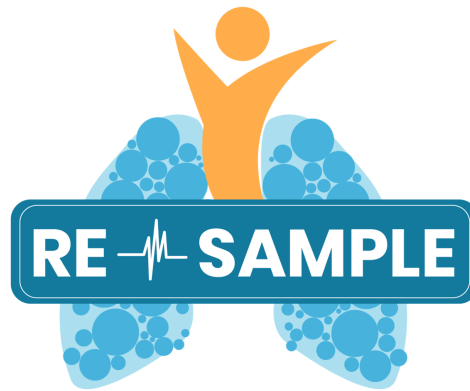




RE-SAMPLE has received funding from the European Union's Horizon 2020 Research and Innovation Programme under Grant Agreement no 965315.



Newsletter N.7, June 2023

Dear reader,

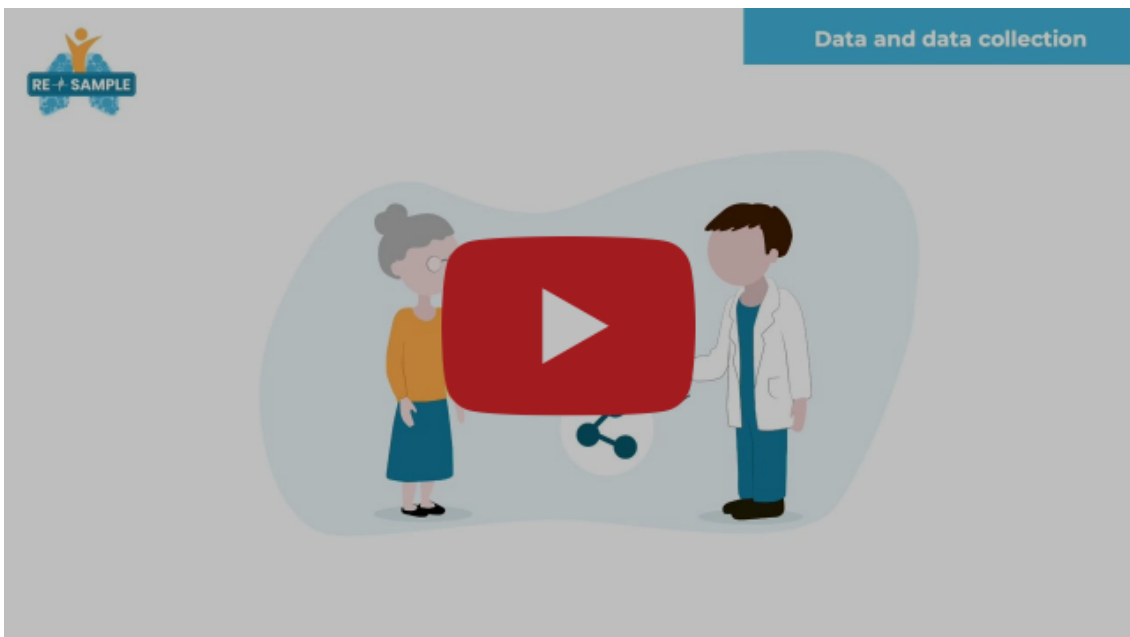
For this summer edition, we present you a selection of videos that were released within the project! If you wish to know more about our project in a friendly manner during summer, this newsletter is for you!

The RE-SAMPLE Project: AI-powered care for patients with COPD and other chronic illnesses



This video introduces the RE-SAMPLE Project by following Maria, a COPD patient with other comorbidities, and presenting how RE-SAMPLE can help her in her daily management of the disease.

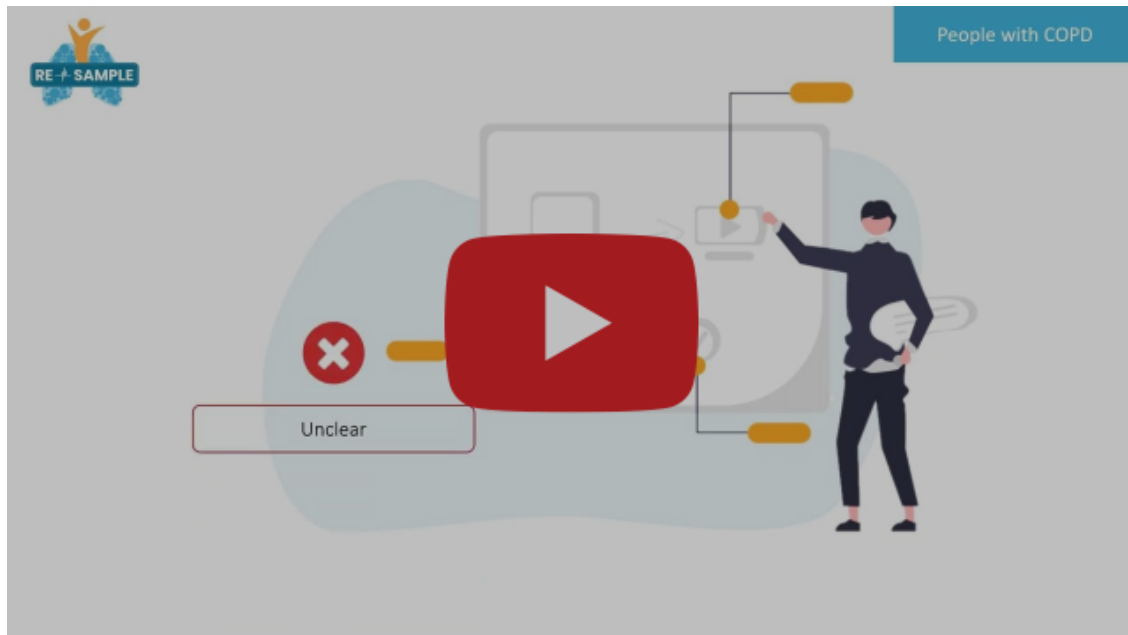
RE-SAMPLE summary of communication with people with COPD and health professionals



To understand what patients and professionals need and how the technology should be designed, several activities (interviews, diaries, workshops) were carried out. This video was the first overview of what was learned from the feedback with end-users.

The video was produced by RE-SAMPLE partner Roessingh Research & Development.

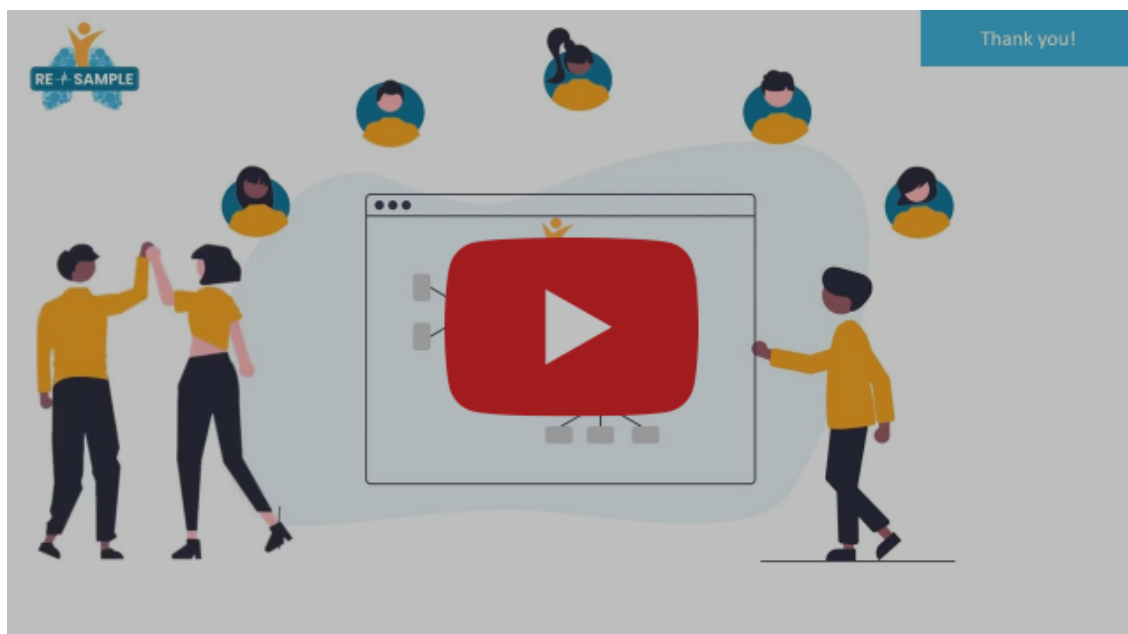
RE-SAMPLE End-user Walkthrough Summary



In the end-user walkthroughs, patients were guided through the future of the technology and gave useful feedback for the development of the prototype.

The video was produced by RE-SAMPLE partner Roessingh Research & Development.

RE-SAMPLE Service Model Summary

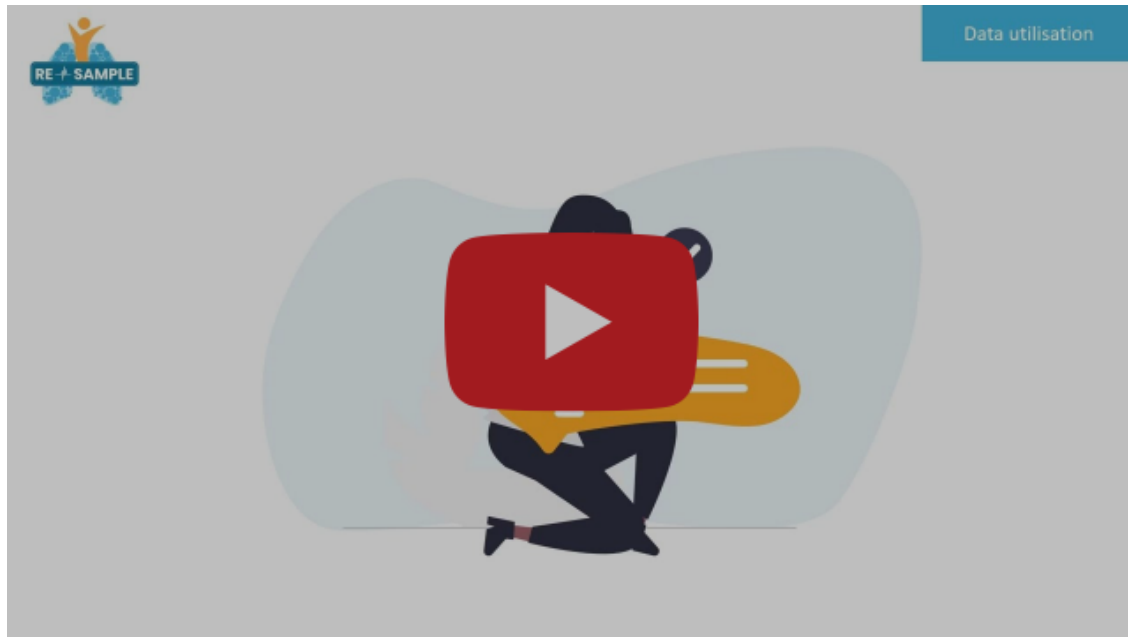


How RE-SAMPLE should be introduced in clinical practice? A service model is one way to know how a product can be useful. A service model is a representation of how technology

and the whole service around it will look like in practice. It is built on the feedback of people who have a role in the project and use the service: the stakeholders.

The video was produced by RE-SAMPLE partner Roessingh Research & Development.

RE-SAMPLE Feedback Interviews about data utilisation, risk prediction and virtual coaching



How should the RE-SAMPLE technology communicate with people with COPD? In three countries, interviews with patients with COPD were conducted, focusing on the utilisation of health data, risk prediction and on the use of a virtual coach.

The video was produced by RE-SAMPLE partner Roessingh Research & Development.

Mini-lecture: Architecture



This mini-lecture on RE-SAMPLE platform architecture was provided by Jakob Lehmann (DFKI) and Gesa Wimberg (DFKI), with inputs from Serge Autexier (DFKI) and Alberto Acebes (Atos) for the RE-SAMPLE consortium meeting in September 2022.

Mini-lecture: User-Interaction



This mini-lecture on user-interaction and its relation to shared decision making was provided by Roswita Vaseur (University of Twente) for the RE-SAMPLE consortium meeting in September 2022.

Mini-lecture: Social Return on Investment



This mini-lecture on SROI (Social Return on Investment) was provided by Stephanie Jansen-Kosterink (Roessingh Research and Development) for the RE-SAMPLE consortium meeting in March 2022.

The SROI method is used in the project to evaluate the societal impact of our innovation.

Mini-lecture: eHealth



This mini-lecture on eHealth was provided by Dr.ir. Monique Tabak (University of Twente) for the RE-SAMPLE consortium meeting in September 2022.

Mini-lecture: Virtual Coaching



This mini-lecture on virtual coaching was provided by Anouk Middelweerd, PhD (University of Twente) for the RE-SAMPLE consortium meeting in March 2023.

Events to come

Consortium meeting in Piraeus, Greece.

The consortium will meet in September 2023 in the University of Piraeus in Greece to discuss the implementation and advancements of the project.



Do you want to know more about RE-SAMPLE activities?

[Click here!](#)



Sign up to receive our newsletter!

Stay in touch with RE-SAMPLE project's progresses and results by subscribing to our newsletter sent out every two months. You can unsubscribe at any moment.

Subscribe



Disclaimer: The information contained in this Newsletter is for information purposes only. The content of this Newsletter does not reflect the official opinion of the European Union. Responsibility for the information and views expressed lies entirely with the authors.

This email was sent to <<Email Address>>

[why did I get this?](#) [unsubscribe from this list](#) [update subscription preferences](#)

RE-SAMPLE · Avenue Marnix 30 · Bruxelles 1000 · Belgium

